



Facts & Figures 2014
(edition 2015)

Development of Energy Demand

The modest economic recovery first observed in 2013 continued in 2014. Estimates prepared by the statistics office Statec indicate that Luxembourg's GDP grew by around 3 % in 2014.

The national electricity consumption has decreased by 0.5 %. The close correlation between changes in GDP and electricity requirements that was evident in previous decades has been less so in recent years. Structural changes have taken place since 2008 and energy-saving measures have doubtless contributed to this change.

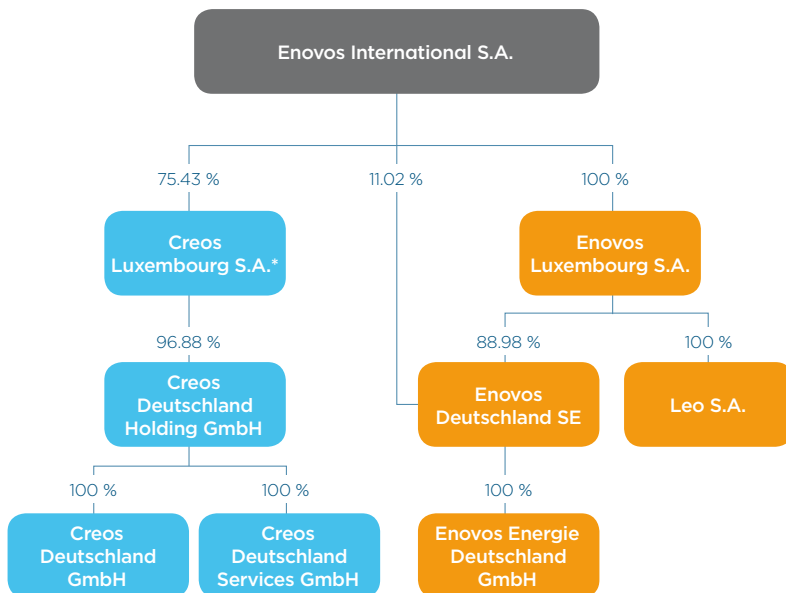
In the natural gas sector, demand in the residential sector fluctuates primarily in line with weather conditions: as 2014 was warmer than 2013, an overall reduction of around 5.25 % was observed in this sector, although the grid had developed and the population has increased.

Industrial demand for natural gas rose slightly in 2014, but electricity production remains low in comparison to previous years.



Structure of the Enovos Group

As at 31.12.2014



* Creos Luxembourg S.A. holds 0.05 % own shares.



Mission and values

Creos' mission to ensure the transportation and distribution of energy over the electricity supply and distribution networks and the natural gas pipelines is carried out reliably and at competitive prices in the Grand Duchy of Luxembourg.

Creos recognises that certain values are essential to the accomplishment of its mission. Day-to-day activities focus on ensuring commitment, quality, safety and innovation.



Commitment



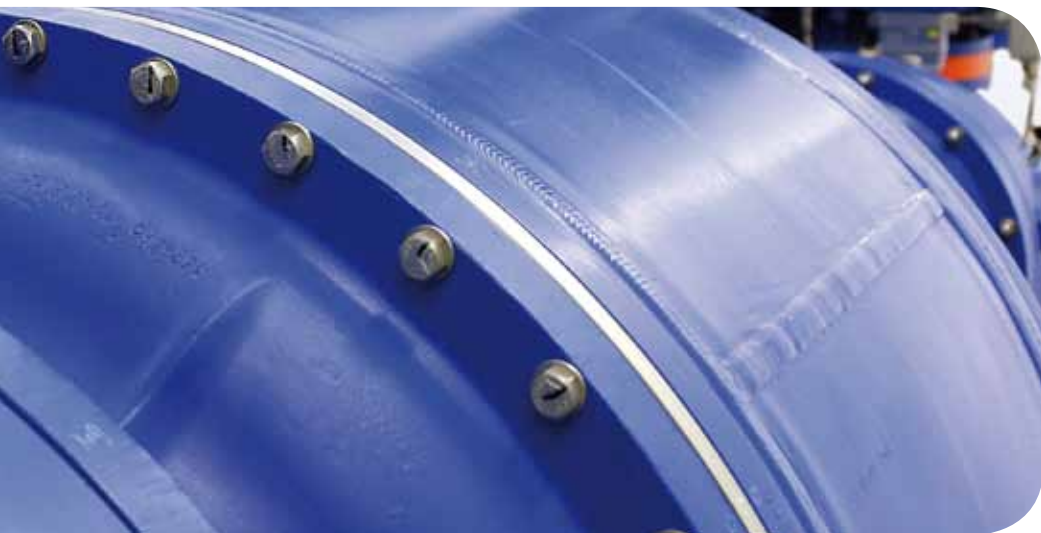
Quality



Safety



Innovation



Shareholder structure

Shareholder structure of Creos Luxembourg S.A. as at 31.12.2014

Enovos International S.A.	75.43 %
City of Luxembourg	20.00 %
State of the Grand Duchy of Luxembourg	2.28 %
Fédération des Installateurs en Equipements Sanitaires et Climatiques (Federation of Sanitary and Air-Conditioning Equipment Fitters)	0.10 %
42 Luxembourg Municipal Authorities	2.13 %
Creos Luxembourg S.A. (own shares)	0.05 %
Total	100.00 %

Financial results

(under Lux GAAP)		2014
Net turnover	M€	223.2
EBITDA	M€	117.3
EBIT	M€	65.3
Profit for the financial year	M€	67.5

Investment plan 2015 - 2019

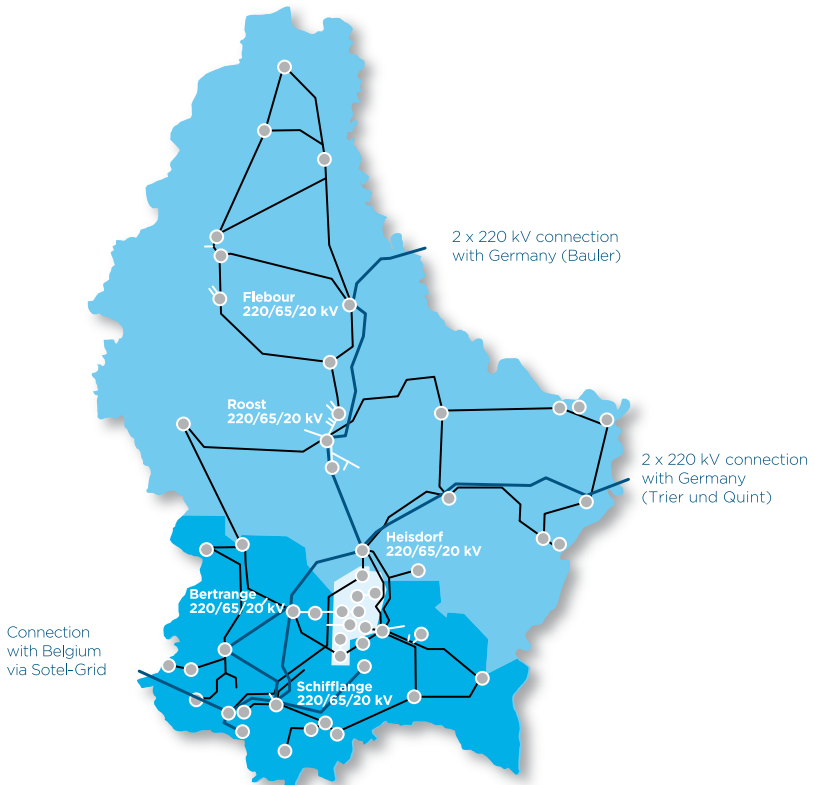
Some 130 MEUR have been invested in 2014, mainly in the electricity grids. The amount of Capex is foreseen to remain at a high level in the next years.

Investment		2015	2016	2017	2018	2019
Electricity	M€	68.72	75.67	75.43	60.04	57.00
Natural gas	M€	16.26	16.87	16.47	14.93	14.51
Buildings	M€	20.20	2.00	6.00	12.00	13.00
Other activities	M€	22.79	10.20	9.61	8.96	8.96
Total	M€	127.97	104.74	107.51	95.93	93.47

Electricity key figures

		2014
Electricity flow	GWh	4,832.8
Electricity network peak	MW	774.2
Network length	Km	9,464.1

The high-tension electricity network



Electricity networks - Technical data

Network evolution		31/12/2014
Transformer substations of 220/65/20 kV	(number)	6
Transformer substations of 65/20 kV (65/5 kV)	(number)	45
Transformer substations of 20,000 to 400/230 V	(number)	2,524
Low-tension lines (400/230 V)	overhead (km)	310
	underground (km)	5,188.2
	Total LT (km)	5,498.2
	Underground rate	94.4 %
Medium-tension lines (20 kV + 5 kV)	overhead (km)	1,077.7
	underground (km)	2,306.7
	Total MT (km)	3,384.4
	Underground rate	68.2 %
High-tension lines: 65 kV 2-phase	overhead (km)	187.1
	underground (km)	25.8
High-tension lines: 65 kV 1-phase	overhead (km)	214.8
	underground (km)	24.3
	Total 65 kV (km)	452
High-tension lines: 220 kV ⁽¹⁾	overhead (km)	122.4
	underground (km)	7.1
	Total 220 kV (km)	129.5
Total	(km)	9,464.1

⁽¹⁾ including Schiffflange-Bascharage-Bertrange (18.7 km) temporarily operated at 65 kV

Protection of people and their environment

Creos has made a specific commitment to bury network infrastructure underground in population centres and the surrounding areas when renewing lines or installing new infrastructure.

These works are often completed in close collaboration with the state and municipal authorities.

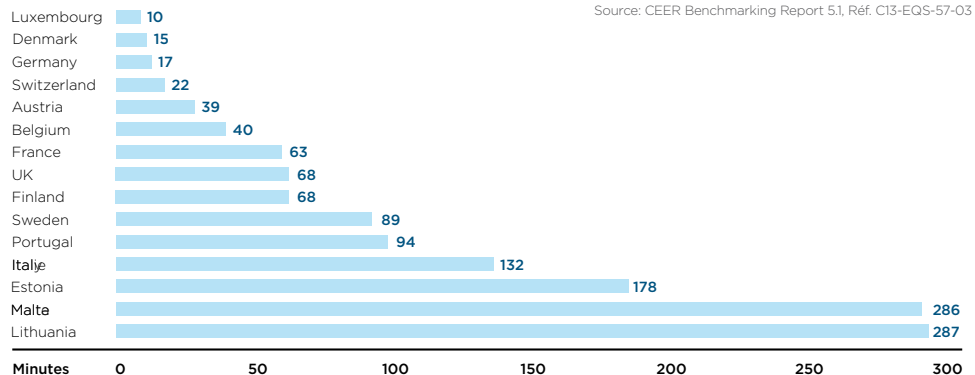
The burial of Creos power lines has now reached 94.4 % in low voltage and 68.2 % in medium voltage which represents more than 7,000 km and therefore more than 2/3 of the grid, a European-level performance.

Security of supply

Reliability of the electricity networks in an international context

The objective of Creos is to provide our customers with a reliable, high-quality electricity grid. We also strive to keep any power supply interruptions and electrical faults to an absolute minimum.

The CEER (The Council of European Energy Regulators) has just published statistics showing that Luxembourg is number 1 in a comparison indicating the average annual power outage time for clients connected to the power grid.

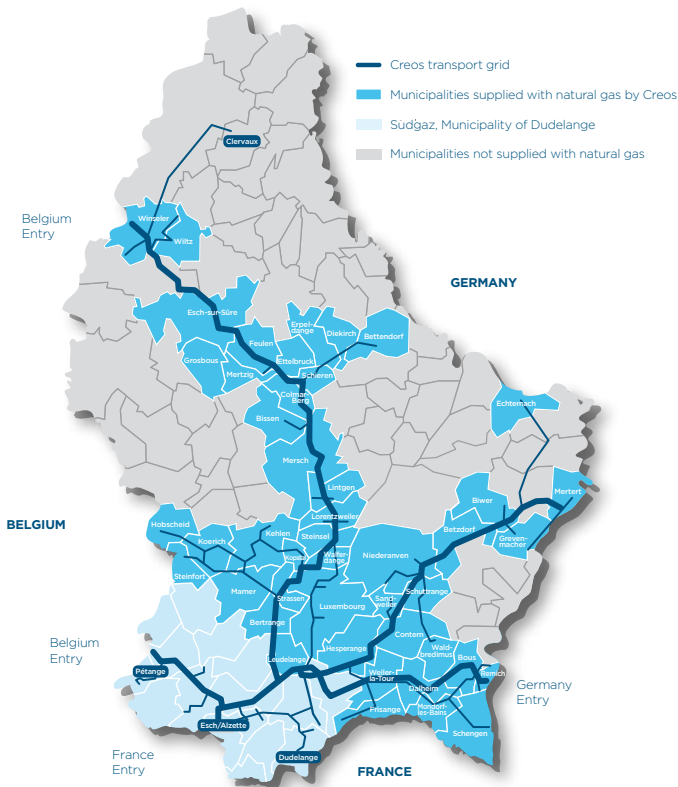


Natural gas key figures

2014

Total gas network capacity	Nm ³ /h	275,289
Gas network peak	Nm ³ /h	244,600
Volume transported	GWh	10,895.4
Network length	Km	1,962.2

The natural gas network



Creos Deutschland GmbH

Key figures

	2014
Gas transport (GWh)	25,533
Revenues (MEUR)	88.9
EBITDA (MEUR)	21.1
EBIT (MEUR)	15.5
Profit for the year (MEUR)	8.7
Workforce	108
Investments (MEUR)	13.9

Creos Deutschland transports natural gas through its near-1,700km high pressure grid in the Sarre and Rhineland-Palatinate regions. The company is responsible for managing natural gas transport and for constructing, operating and maintaining high pressure gas pipelines and the associated technical installations. Personnel with advanced technical, commercial and legal know-how provide optimal management of the energy networks.



Pictures: Shielded substations



Creos Luxembourg S.A.
Electricity and natural gas grid operator
Legal headquarters:
59-61 rue de Bouillon L-1248 Luxembourg
Main offices:
2, rue Thomas Edison L-1445 Strassen
Postal address: L-2084 Luxembourg
Tel.: 2624-1 Fax: 2624-5100
info@creos.net
creos.net